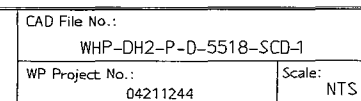


PT NO	COMPONENT DESCRIPTION	N.S. (INS)	CLASS	QTY
	<u>PIPE</u>			
1	PIPE;SEAMLESS;;BE;;ASME B36.10 API 5L;GR.B OR ASTM A106;GR.B;NACE MR0175; STD	2	B	1.2M
	<u>FITTINGS</u>			
2	ELBOW;90DEG.LR;SEAMLESS;BW;;ASME B16.9 ASTM A234;GR.WPB;NACE MR0175; STD	2	B	2

DESIGN PRESS: 3800	kpag	DESIGN TEMP: 110/0	°C								
TEST PRESS: 7650	kpag	TEST WITH: Water									
RADIOGRAPHY: 100	%	STRESS RELIEVE: NO									
INSULATION SPEC: N/A											
COATING SPEC: DHF-00-M-S-0003											
<p align="center"><b>STRESS CATEGORY</b></p> <p>THIS LINE HAS BEEN STRESS ANALYSED DO NOT ALTER THE ROUTING/MODIFY THE SUPPORTS WITHOUT THE PRIOR APPROVAL OF RANHILL WORLEY</p>											
				CO	29/05/09	HAZ	APPROVED FOR CONSTRUCTION	PSV/AH	SEM		
P&ID REF: WHP-DH2-R-D-1053	REV	DATE	BY	DESCRIPTION				CHECK'D	W/P APPR'D	VSP APPR'D	DATE



PLANT:	WELLHEAD PLATFORM - DH2
--------	-------------------------

PDMS LINE NO.: SCD-2"-DC-B-5518

Drawing No.:	SHEET NO.	REV.
WHP-DH2-P-D-5518-SCD-1	1 OF 1	C0